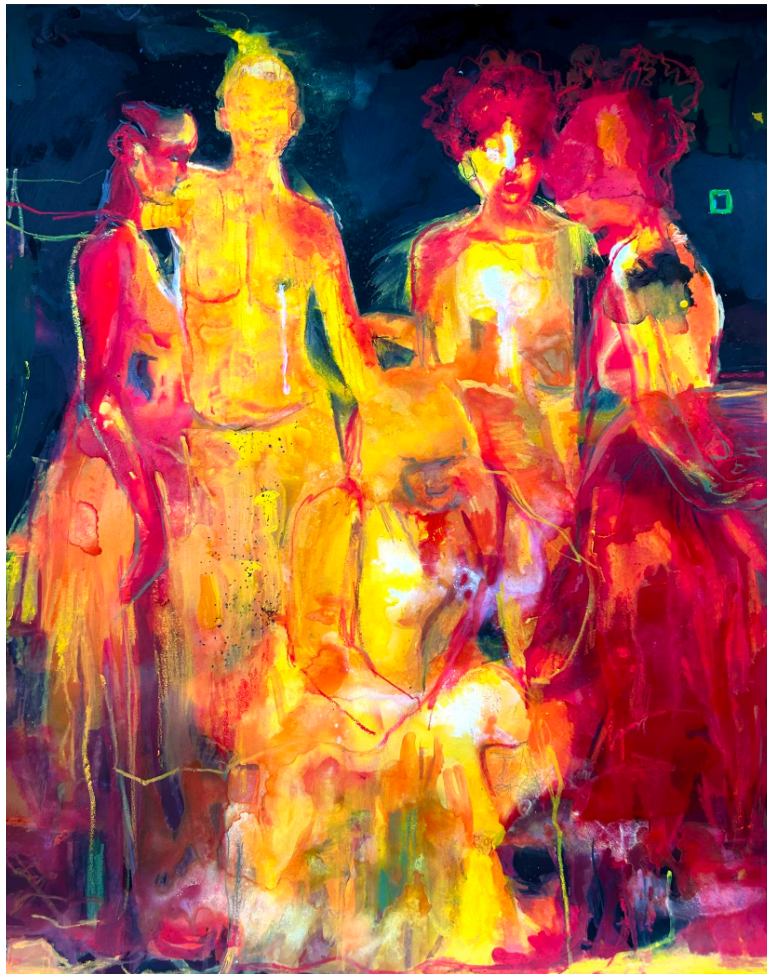




**Palo Gallery at Art Cologne 2024**  
Collaborations Sector  
*Folklore, Myth and Fairytales in Female Figurative Art*  
November 7th - November 10th, 2024



Lewinale Havette, *Drink*, 2024. Image courtesy of the artist and Palo Gallery.

**Palo Gallery** is pleased to announce its participation in **Art Cologne 2024** as part of the Collaborations sector, presenting the work of Lewinale Havette, Natalie Frank, and Nell Brookfield. Founder Paul Henkel curated the selection of thirteen works of art exploring the role of mythology, folklore, and fairy tales in female figurative art. Each artist engages with the collaborative theme from their own unique perspectives and histories. Havette engages with her models as vehicles to explore the traditional religious practices of West Africa in the form of *Sibyls* or *Mami Wata* spirits. Natalie Frank takes a feminist approach to her fictive subjects, often engaging with the original feminine history of European fairy tales such as those of the brothers Grimm. Meanwhile, Nell Brookfield pulls from a collective history of British folklore and art to illustrate her personal experiences and those of young women alike. The presentation will reveal fascinating connections, juxtapositions, and commonalities between these three unique and powerful practices.

**About Palo Gallery**

Established in 2018 in New York City by third-generation art collector and dealer Paul Henkel, Palo Gallery brings to bear a tradition of art scholarship and patronage, working as a true thought partner with artists to realize their visions and create dynamic presentations. The gallery's multifaceted program ranges from tightly curated, thematic group exhibitions to insightful art historically informed solo exhibitions spanning a breadth of artistic endeavors. Extensive research by the Palo Gallery curatorial team ensures that each exhibition is advised by the art historical canon and contemporary cultural touchpoints. In 2022, Palo Gallery opened its 3,400-square-foot flagship space designed by Selldorf Architects in the NoHo district of Manhattan at 30 Bond Street. Palo Gallery's secondary space at 21 East 3rd Street opened in June 2024.

**Media Contact**

FITZ & CO | Sarah St. Amand | [sstamand@fitzandco.com](mailto:sstamand@fitzandco.com) | +1 978 844 4086

FITZ & CO | Lachlan Woolsey | [lwoolsey@fitzandco.com](mailto:lwoolsey@fitzandco.com) | +1 646 847 0022